

Finishes

Cherner products are available in the following finishes:

Natural Walnut, Classic Walnut, Classic Ebony, Ebony Lacquer, White Lacquer, Natural Beech, Natural Redgum, Natural White Oak and 'Stella' Orange.

Natural

Natural finishes have a clear top coat where the natural variations in the color and the grain of the wood are clearly visible. No stain or color enhancements are used. Products with a Natural finish include: Beech, Red Gum White Oak and Walnut.

Classic

Aniline dyes and water-based low VOC varnishes are used to produce a finish where the natural grain texture of the wood is clearly visible with uniform color through-out. Classic color finishes are: Walnut, Ebony and 'Stella' Orange.

Lacquer

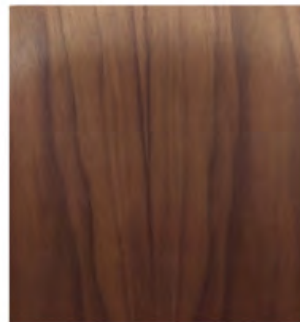
Products with lacquer finishes have no wood grain visible. The surface is smooth, without texture. The color is consistently uniform. Lacquer finishes are available in Ebony or White.



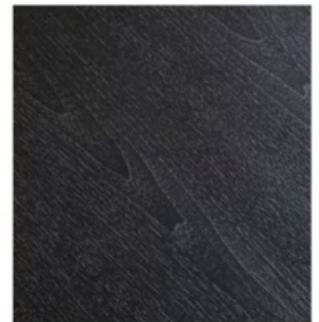
Natural Beech



Ebony Beech



Classic Beech



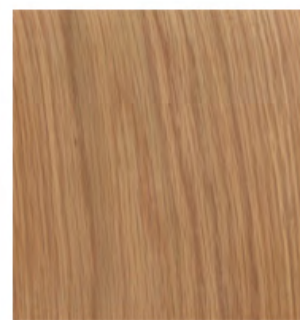
Classic Ebony



Natural Walnut



Red Gum



White Oak



Stella orange

Natural Walnut vs. Classic Walnut

'Natural' walnut products have only a clear finish applied. The lighter beech core and darker walnut face veneer are brought into vivid contrast. Products with a 'Classic' walnut finish have a stain applied to both the beech core and the face veneer which gives the products a uniform walnut color with very little contrast in color between the beech core and the walnut veneer.

Custom Finishes

Cherner products are available with custom finishes. Minimum order quantities apply. Please contact us for information on custom colors.

Upholstery Specifications and Requirements

Cherner seating products can be ordered with:

- Seat Pad only
- Seat Pad and Back Pad
- One Piece Pad (not available on Lounge Chairs)

Pads have 3/4" of medium density foam and are wrapped with one of the following options: Spinneybeck leather, Maharam Fabric or the customer's own material (COM)

Seat pads must be installed at the factory and must be ordered at the same time as the chair, stool or ottoman. Seat pads cannot be purchased separately or installed on previously purchased products.

Spinneybeck Leather:

Sabrina is full grain leather with a smooth, tight grain and suppleness of hand. This product is the favorite of clients seeking elegant, fine-grained leather for high-traffic use.

Velluto Pelle is lightly enhanced aniline dyed leather. The light enhancement process refines the surface providing a supple and smooth feel.

Vicenza is a corrected grain, aniline leather. Vicenza receives a special retannage which enriches the leather, tightens the grain and provides a superior hand.

Leather samples are available for order at the Spinneybeck website (www.spinneybeck.com). Other grades of Spinneybeck leathers can be special ordered.

Maharam Fabrics:

A wide range of Maharam fabrics are available for upholstery in a variety of colors and textures:

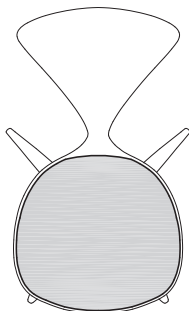
Divina: 100% Wool

Hallingdal : 70% Wool

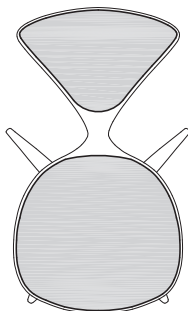
Lariat: 100% Vinyl

COM – Customer's Own Material Requirements:

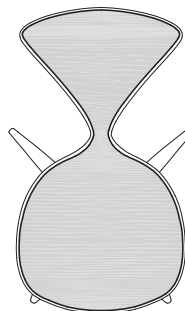
- **0.5 yard fabric / 5 sq ft leather** required for Seat Pad Only
- **1.0 yard fabric / 8 sq ft leather** required for Seat Pad and Back Pad
- **1.0 yard fabric / 5 sq ft leather** required for Ottoman
- **1.5 yard fabric /10 sq ft leather** required for Lounge Chair
- **1.5 yard fabric /12 sq ft leather** required for One Piece Upholstery (not all leather colors available)



seat pad only



seat pad and back pad



One Piece upholstery
(not available on Lounge Chairs)

Cherner

Upholstery Images



One Piece Upholstery



Upholstered Seat Pad and Back Pad



Upholstered Seat Pad only

