

PELLE

LONG BUBBLE CHANDELIER

Collection:

Bubble Chandeliers

Design Year:

2013

Dimensions:

L 62in/158cm x H 16in/40cm x W 17in/43cm

Also available in 48", 80" and 96" length

Weight:

17lbs/7.7kg

Illumination (120V):

Incandescent: 6x G40 Globe (40 or 60W) / Clear / E26 Medium Screw Base / 240W-360W / 2700K

OR

LED: 6x G40 Globe / Clear / E26 Medium Screw Base / 18W / 1200 Lumens / CRI 95+ / 2500K / ELV Dimmable

Illumination (240V):

Incandescent: 6x G40 Globe (40 or 60W) / Clear / E27 Medium Screw Base / 240W-360W / 2700K

OR

Screw Base LED upon request

Suspension:

Steel cable or fixed pipe suspension (see configuration options)

Materials:

Machined metal, hand-blown glass globes, decorative cotton or leather coiling

Metal Finish Options:

Standard: Satin Brass, Polished Nickel

Upgrades: Antique Brass, Dark Bronze, Black Brass

Decorative Coiling Options:

Standard: Natural Cotton cord

Upgrades: White, Natural, Henna, Iris Blue, Dark-Brown, Grey and Black Leather cord. Custom leather colors available upon request.

Lamp Cord Color Options (Suspension Options 01 + 02):

Standard lamp cord colors are white, brown and black. Ships with 6ft/1.8m standard length.

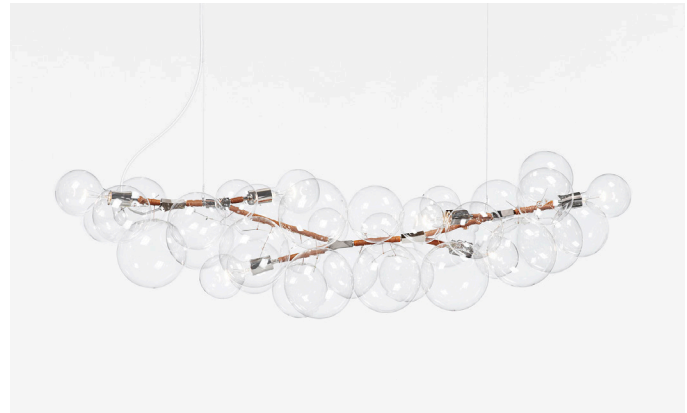
Certifications:

UL, cUL (120V Incandescent, LED)

CE (240V Incandescent, LED)

Made in:

New York, USA



Pictured with Polished Nickel
and Henna Leather Cord

