

LUNA

Chandelier



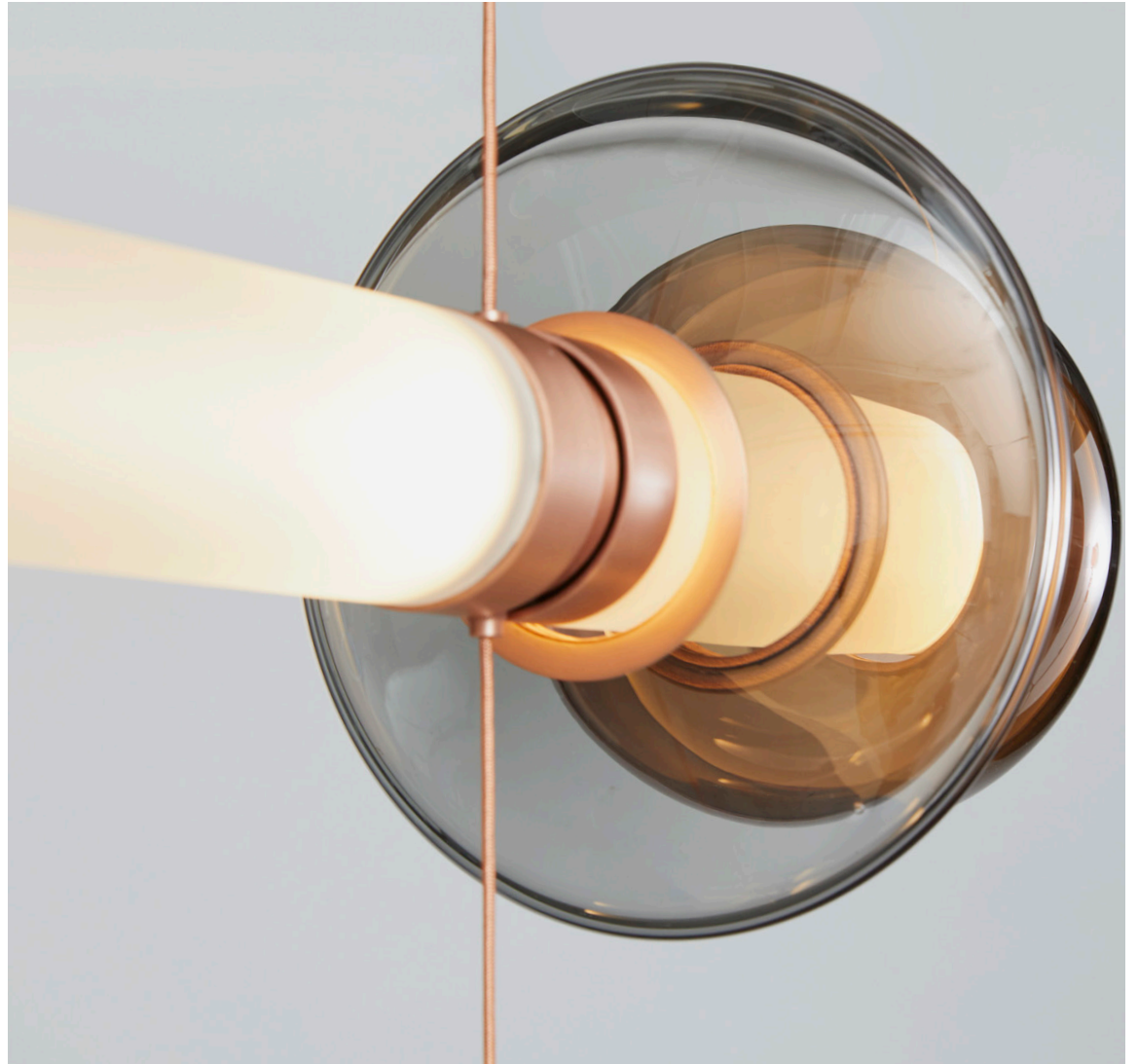
GABRIEL SCOTT

EST 2012



LUNA

Chandelier



GABRIEL SCOTT

EST. 2012



Spec sheet

Product name: Luna Chandelier

Standard Leadtime: 12 - 14 Weeks



Dimensions: Tier 1: 47.39" x 9" x 9" + DROP
120.37cm x 23cm x 23cm + DROP

Tier 2: 58" x 22" x 18.5" + DROP
146cm x 56cm x 47cm + DROP

Tier 3: 58" x 27" x 27" + DROP
146cm x 68cm x 68cm + DROP

Light Source: 24V 6 Watt LED Bulb (included)

Standard Cable Length: 96" Drop, adjustable upon installation
(increased cable-lengths available upon request)

LED driver: E96R24DC 
UVC24100TD 

Weight: 70 LBS (large)
31.75 KG

Standard Finishes

HARDWARE:



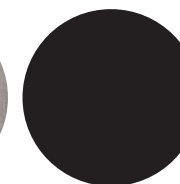
Satin Brass



Satin Copper



Satin Nickel



Blackened Steel

CANOPY:



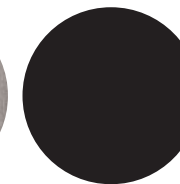
Satin Brass



Satin Copper



Satin Nickel

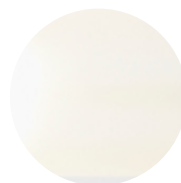


Blackened Steel



Matte White

TUBE GLASS:



White

LUNA

Chandelier



GABRIEL SCOTT

EST. 2012



