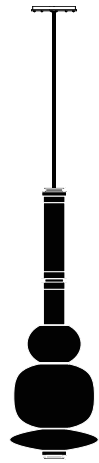

LUNA
Pendant



GABRIEL SCOTT
EST 2012



LUNA Pendant

1/6

A lighting system with infinite interpretations, the LUNA is a synergy of color, shape, and refracted light. Inspired by a lunar halo, the modular light fixture grows in every direction as its assembly system stems horizontally or vertically, stacking color upon color of various blown-glass shapes. The LUNA series is a glamorous reference to the moon's diffused light and soft glow. Allusive yet glamorous, the LUNA is a new tradition in glass-work and light form. Available in a variety of colors and shapes, LUNA is a highly customizable fixture.

All GABRIEL SCOTT pieces are handmade in Canada.



GABRIEL SCOTT

EST. 2012



LUNA Pendant

2/6



GABRIEL SCOTT

EST. 2012



LUNA Pendant

3/6



LUNA Pendant

4/6

Spec sheet

Product name: Luna Pendant

Standard Leadtime: 12 - 14 Weeks

Dimensions: 32.5" x 9" x 9" + STEM
82.7cm x 23cm x 23cm + STEM

Light Source: 24V 6 Watt LED Bulb (included)

Standard Stem Lengths: 6", 12", 18", 24"
15.25cm, 30.5cm, 45.75cm, 61cm

Additional Stem Lengths:
(up-charge applies): 30", 36", 42", 48"
76cm, 91.5cm, 106.5cm, 122cm

LED driver: E96R24DC 
UVC24100TD 

Weight: 25 LBS
11.33 KG

Standard Finishes

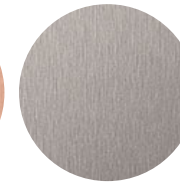
HARDWARE:



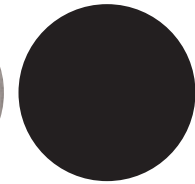
Satin Brass



Satin Copper



Satin Nickel



Blackened Steel

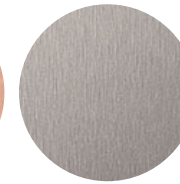
CANOPY:



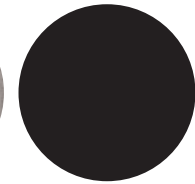
Satin Brass



Satin Copper



Satin Nickel



Blackened Steel



Matte White

TUBE GLASS:



White

GABRIEL SCOTT

EST 2012



LUNA Pendant

5/6



GABRIEL SCOTT

EST. 2012



LUNA Pendant

6/6

