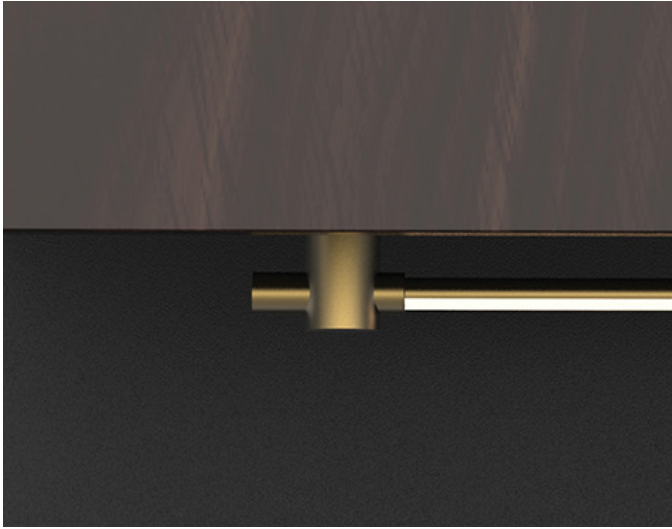

APPLICATIONS: SURFACE MOUNT



UNDER-CABINET LIGHTING

45mm standoffs are perfect for undercabinet applications, unobtrusive and elegant.



RETAIL DISPLAY

Configurable and extendable low voltage light modules are easily integrated into display settings. High CRI LEDs make products look their best.



PICTURE LIGHTING

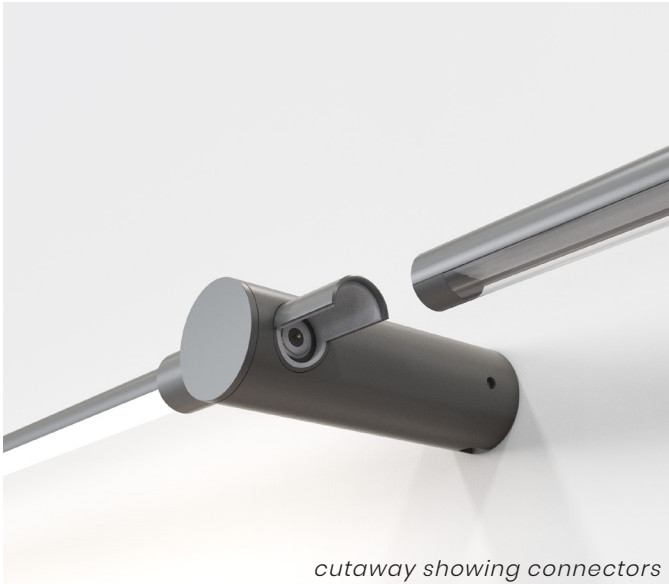
180mm standoffs are designed for lighting artwork. Plug-in and low voltage direct installation options fit multiple situations.



BATHROOM VANITY

ETL listed, damp location rated for bathroom vanity use. The light segments are infinitely rotatable for perfect light angles.

FEATURES & BENEFITS: SURFACE MOUNT



cutaway showing connectors

MAGNETIC CONNECTORS

The low-voltage magnetic connectors incorporated into the light segments are functional – the lighting direction can be rotated when the fixture is lit, which makes installation easy and intuitive.



ROTATABLE LIGHT SEGMENTS

The magnetic connectors mean that one fixture can be configured to orient light up, down, or back on the wall. A multiple segment fixture can illuminate different points of interest.



STANDOFF HEIGHTS

45mm, 90mm, and 180mm standoffs allow for a range of applications, from undercabinet and soffit lighting to retail display, library stacks, and general wall-washing.

ADDITIONAL FEATURES:

QUALITY LIGHT

90CRI standard with a range of color temperature options available

600 lumens per 24" segment | 920 lumens per 36" segment

SIMPLE INSTALLATION

Whole-inch spacing, rotatable light segments, snap-in magnetic connectors, and 24VDC low-voltage wiring make install easy.

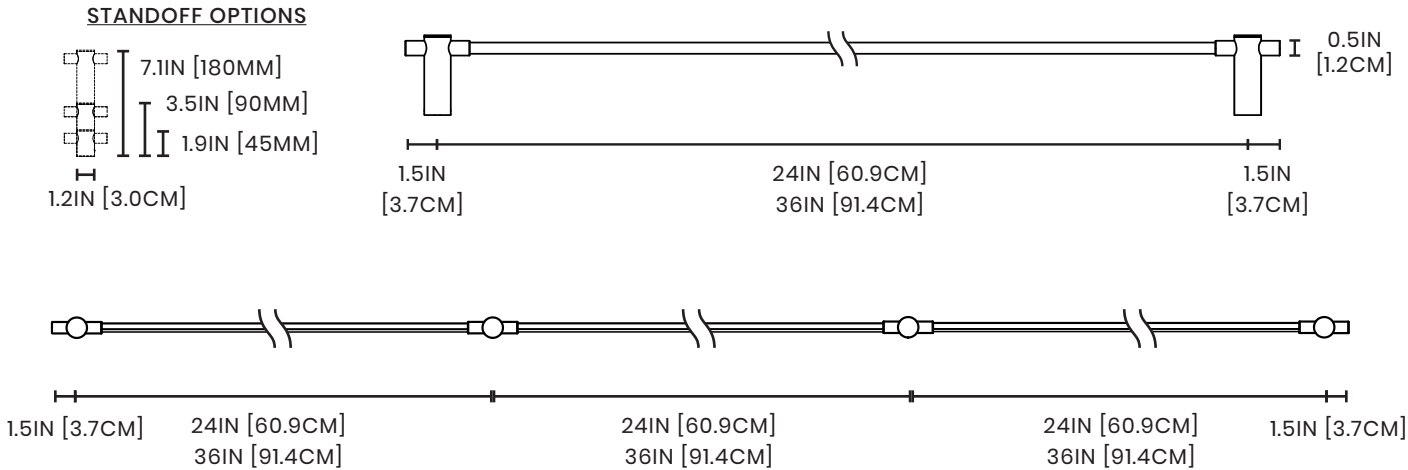
LUXURY FINISHES & MATERIALS

Satin Brass, Satin Nickel, and Black Oxide finishes complement high-end interior construction. Brass and acrylic are sturdy and long-wearing.

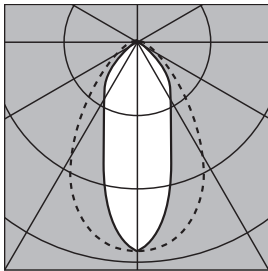
CONFIGURABILITY

Constant-voltage system means multiple Light Segments can be powered from one power supply, simplifying system design. Multiple power supply options are available to meet most dimming requirements.

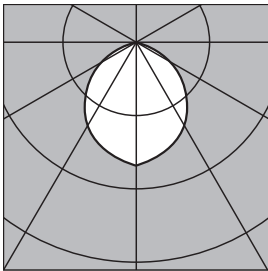
TECHNICAL | THIN Surface Mount



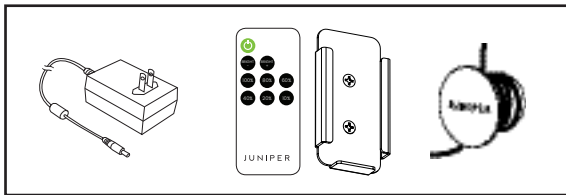
24IN AND 36IN LIGHT SEGMENTS MAY BE COMBINED IN THE SAME FIXTURE
 STANDARD MAX LENGTH PER FIXTURE IS (3) 36" LIGHT SEGMENTS 110.8IN [281.5CM]
FOR LONGER RUNS, PLEASE CONTACT JUNIPER



CLEAR LENS
 40° BEAM ANGLE



FROSTED LENS
 90° BEAM ANGLE



OPTIONAL PLUG-IN POWER SUPPLY WITH RF DIMMER CONTROLLER, HOLDER, & CORD WRAP FOR 3 METER CORD

ILLUMINATION

90 CRI
 2700K, 3000K, 3500K, 4000K options

24" segment 600LM delivered / 6.8W
36" segment 920LM delivered / 9.6W
 90LM/W with clear acrylic lens
 50,000 hrs LED life L80

POWER

120VAC Input Voltage
 24VDC Class 2 Constant Voltage
 Contact Juniper for alternate inputs

FINISHES

Satin Brass, Black Oxide, Satin Nickel

MATERIALS

Solid brass, PMMA

DIMMING

2-Wire/TRIAC/Forward Phase
 0-10V
 3-Wire
 See Power Supply section for details
 Contact Juniper for alternate requirements

MOUNTING

Wall brackets mount directly to surface

SYSTEM RUN

Limited by power supply wattage only
 2 X 18AWG in-wall rated cable
 recommended for remote power
 supply installation (provided by
 electrician)

BUILD A SPECIFICATION | THIN Surface Mount

SERIES	FINISH	SEGMENTS	STANDOFFS	COLOR TEMP	LENS	POWER SUPPLY
JPR-THEW	0	0 0 0				

SAMPLE SKU: JPR-THEW-01-000222-090-30-C-B

Satin Brass, (3) 24" segments, 90mm standoffs, 3000K, clear lens, standard remote power supply, 2-Wire/TRIAC/Forward-Phase

CODE DEFINITIONS

FINISHES



01 Satin Brass **02** Black Oxide **03** Satin Nickel

SEGMENTS

- 0** No segment
- 2** 24IN segment - 600LM delivered / 6.8W
- 3** 36IN segment - 920LM delivered / 9.6W

Note: each digit represents a single segment, e.g. 000023 is (1) 24" segment and (1) 36" segment, 0000333 is (3) 36" segments

Contact Juniper for custom segment lengths

STANDOFF LENGTH

- 045** 45mm Standoffs
- 090** 90mm Standoffs
- 180** 180mm Standoffs

COLOR TEMPERATURE

- 27** 2700K
- 30** 3000K
- 35** 3500K
- 40** 4000K

LENS

- C** Clear - 40° beam angle
- F** Frosted - 90° beam angle

POWER SUPPLY - 24VDC CV OUTPUT

B Standard Remote, 2-Wire/TRIAC/Forward-Phase

Input Voltage 120-277VAC (Universal)

Output Wattage 30W, 60W, or 96W

C Standard Remote, 0-10V

Input Voltage 120-277VAC (Universal)

Output Wattage 30W, 60W, or 96W

D Lutron Remote, 2-Wire/TRIAC/Forward-Phase

Input Voltage 120VAC

Output Wattage 40W

E Lutron Remote, 3-WIRE

Input Voltage 120-277VAC (Universal)

Output Wattage 40W, or 96W (Ecosystem)

G Plug-in Power Supply, 24VDC

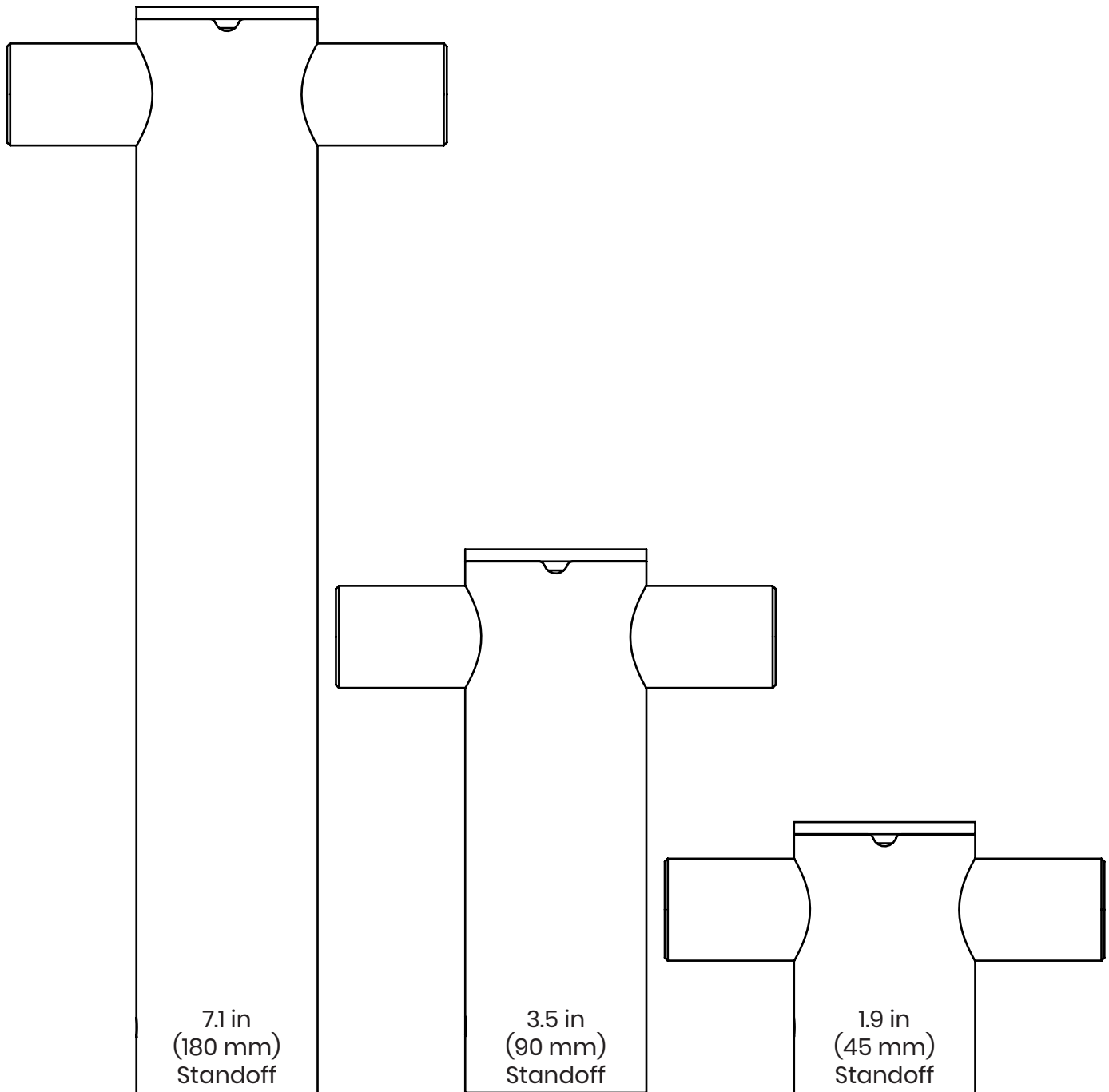
*Not compatible with **45mm Standoff**

Output Wattage 36W, or 40W

Remote control dimmer, cord wrap & cord included

Our team will determine correct wattages for power supplies based on chosen configuration. Contact Juniper for custom requirements or further power supply specifications.

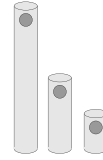
Project	Type
Notes	



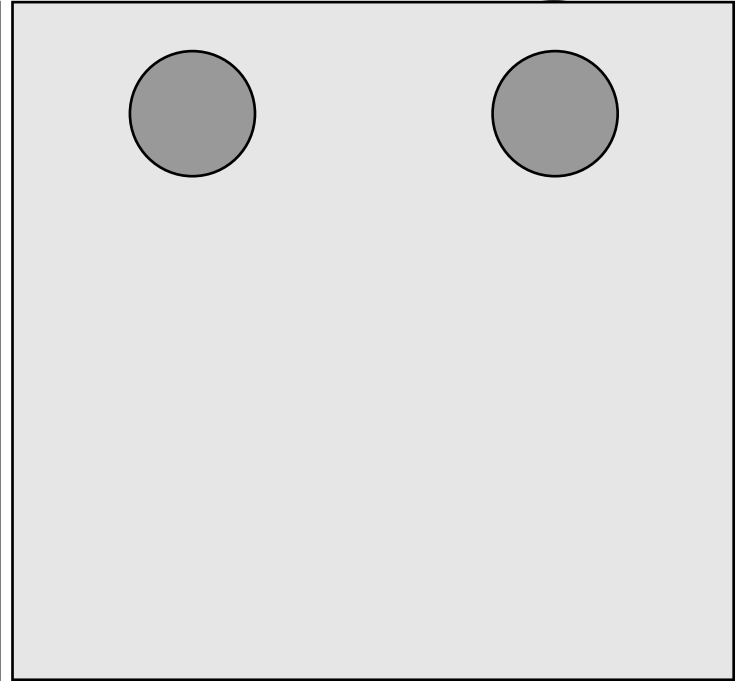
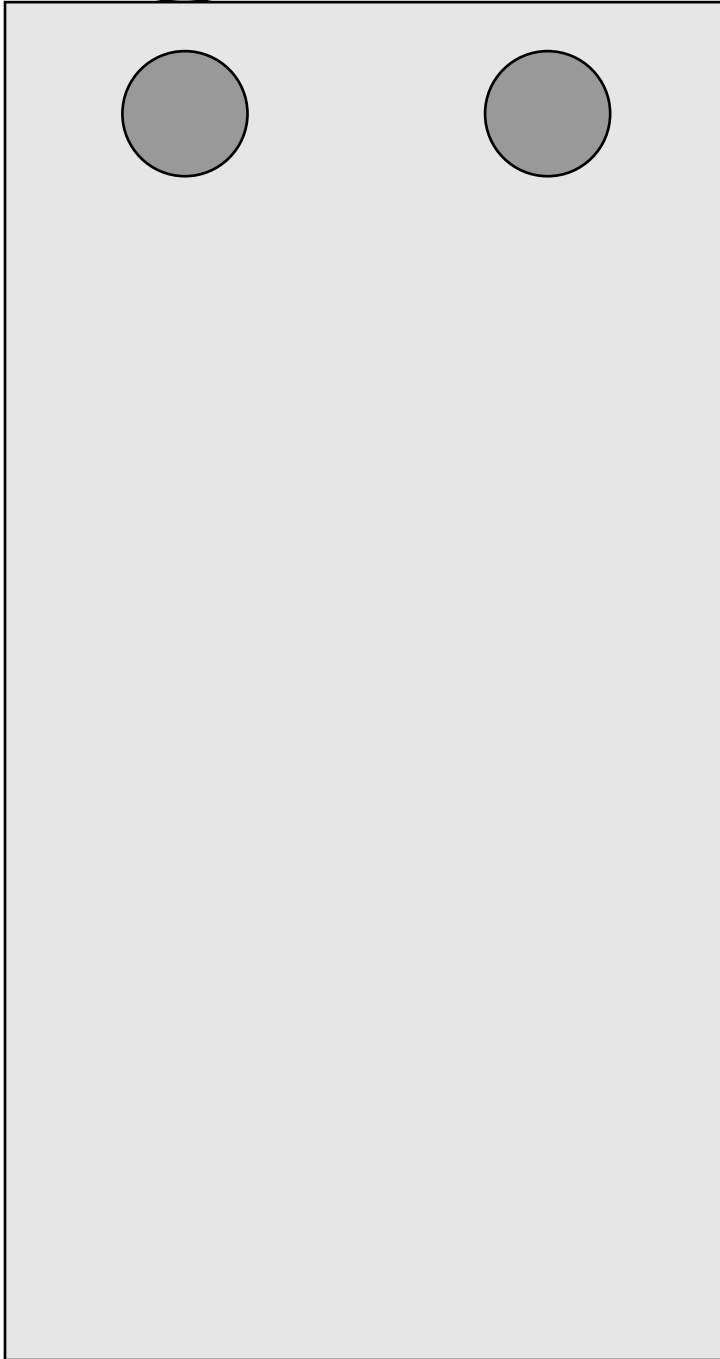
Use the following two pages to visualize your desired standoff height. Our drawings are to-scale and easily printable to help envision our three standoff heights. While this page shows a simple 2D to-scale drawing, you can get creative and assemble 3D models from the template shown on the next page.

7.1 in
(180 mm)
Standoff

For 3D models, print out this page, cut along seams, fold into place, and hold together with tape. We recommend keeping top and bottom circles connected to cylinder walls for easier assembly. Dark circles mark where light segments connect to the standoffs.



3.5 in
(90 mm)
Standoff



1.9 in
(45 mm)
Standoff

