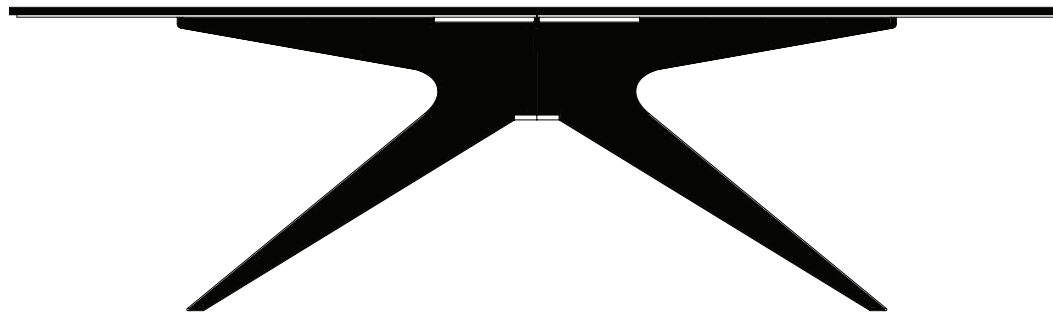

DEAN
Dining Table



GABRIEL SCOTT
EST 2012



DEAN

Oval Dining Table

1/3

Inspired by silhouettes of mid-century modern design, the DEAN Dining table feature various marble top options supported by its bold and sculptural base below.

Light and elegant in appearance, the stylish x-base is available in black steel with brass hardware, all brass, or all copper options. Custom sizes available.

All Gabriel Scott pieces are handmade in Canada.



GABRIEL SCOTT

EST. 2012



DEAN

Oval Dining Table

2/3



GABRIEL SCOTT

EST. 2012



DEAN

Oval Dining Table

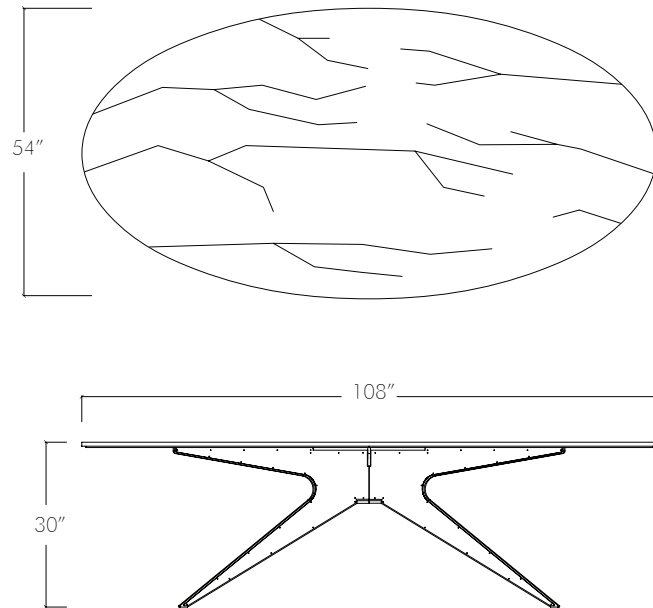
3/3

Spec sheet

Product name: Dean Oval Dining Table

Standard Leadtime: 14 - 16 weeks

Dimensions: 54" x 108" x 30" H
Marble Top: 3/4"



Standard Finishes

Standard Base Finish Options:

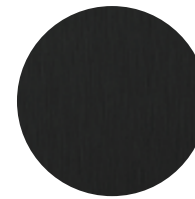
- Blackened Steel (black)**
- Satin Brass (brass)**
- Satin Nickel (nickel)**
- Satin Copper (copper)**

Standard Hardware Finish Options:

- Blackened Steel (black)**
- Satin Brass (brass)**
- Satin Nickel (nickel)**
- Satin Copper (copper)**

Marble Options:

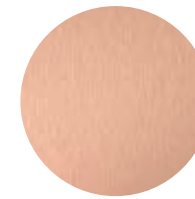
- Grigio Carnico (black)**
 - Grigio Billiemi (brown)**
 - Onda Argento (silver)**
 - Stattuario (white)**
- Marble is not sealed*



Blackened Steel



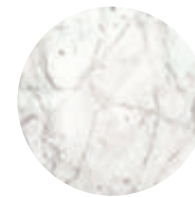
Satin Brass



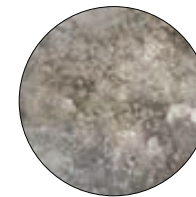
Satin Copper



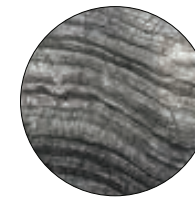
Satin Nickel



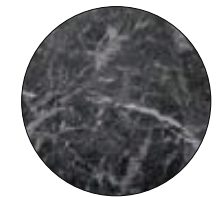
Stattuario (white)



Grigio Billiemi (brown)



Onda Argento (silver)



Grigio Carnico (black)

GABRIEL SCOTT

EST. 2012

