



CYLINDER[®] SWING ARM SCONCE

THE CYLINDER SERIES IS A SYSTEM OF FIXTURES THAT ELEVATE THE EXPERIENCE OF FUNCTIONAL LIGHTING. AN ADJUSTABLE PIVOTING HEAD AND ROTATING ARM PROVIDE FUNCTIONAL LIGHT WITH AN ELEGANT ARMATURE. BRASS TURN-DIMMER KNOB AND LEATHER COVERED COUNTERWEIGHT.

A P P A R A T U S

CYLINDER[®] SWING ARM SCONCE

DIMENSIONS: 8" H, 5.5" W, 19" D

APPROXIMATE WEIGHT: 5 LBS

120 V LAMPING:

1 DIMMABLE LED PAR20 BULB 7W EACH

7W 2700K BULB INCLUDED

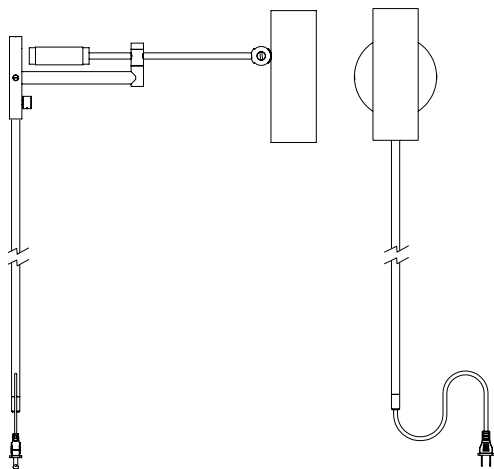
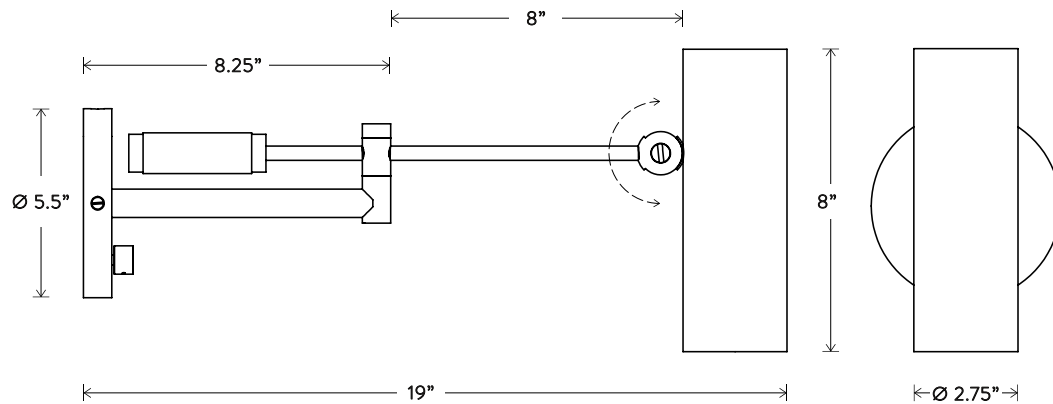
240V LAMPING:

1 DIMMABLE LED PAR20 BULB 5W EACH

5W 2700K BULB INCLUDED

UL / CE APPROVED

VOLTAGE: 120-240



EXTERNAL MOUNT KIT INCLUDES
60" OF STEM

A P P A R A T U S